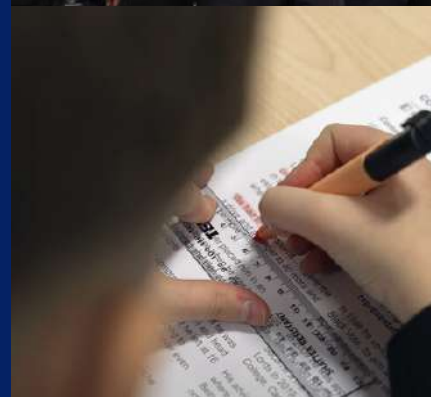




**Barnsley Academy**  
The best in everyone™  
Part of United Learning



# YEAR 9 OPTIONS PROSPECTUS

AMBITION | DETERMINATION | RESPECT



# Barnsley Academy



# Contents

Contents	Page
An Introduction from the Vice Principal	1-2
Options Timeline	3
Option Bands	4
Subjects & Pathways	5
Understanding Grading	6
Our Subjects	7
GCSE English Literature & Language	8
GCSE Maths	9
GCSE Combined Science	10
GCSE Triple Science	11
GCSE French	12
GCSE History	13
GCSE Geography	14
BTEC Travel and Tourism	15
GCSE Computer Science	16
Creative iMedia (Cambridge National)	17
GCSE Business	18
GCSE Photography	19
GCSE Fine Art	20
Hospitality & Catering (Vocational Award)	21
Sport Studies (Cambridge National/BTEC)	22
GCSE Music	23
GCSE Statistics	24
GCSE Religious Studies	25
GCSE Citizenship	26
BTEC Tech Health & Social Care	27

# An Introduction from the Vice Principal

Dear Year 9 Student,

**The Options Subject Information booklet sets out the subject choices available for Year 9 students as you move into Years 10 and 11 at Barnsley Academy. We firmly believe that the curriculum offer we have in place provides a variety of subjects to cater for all interests and talents, whilst retaining a strong focus on quality and high academic expectations. We want the 'best in everyone,' regardless of the subjects you want to study at KS4. We are confident we have created option pathways that will support all of you to experience success and enjoyment in your studies. No one pathway is better than the other - they are just different routes to success.**

We want you to be able to fulfil your personal ambitions. We will always encourage you to aim high and have the highest expectations of yourselves. We hope you will want to continue your studies for as long as possible, learning new skills and gaining qualifications that will shape your future careers. Our advice to all of you is to never stop striving to be the best version of you and never stop learning.

**Set your sights high. As many students as possible will be allocated to the yellow pathway to ensure they are entered for the EBacc qualification** because they have the potential to achieve a GCSE in Maths, English, Science, History or Geography, as well as GCSE French. Languages are a gift.

As Nelson Mandela famously said *"If you talk to a man in a language he understands, it goes to his head. If you talk to him in his language, that goes to his heart."*

The Yellow pathway promotes languages and ensures more of you experience the joys of learning a language, which will hopefully help you on your journey. **Achieving the EBacc gives you a competitive edge over your peers when applying for university and pursuing your chosen career.** They prepare you to be a confident and capable candidate for any job, both in the UK or abroad, and ensure you remain competitive in today's jobs market.

The green pathway still offers the opportunity for students to access a range of EBacc subjects should they wish to but also offers increased access to other subjects that may be more appropriate and practical in nature.

**Regardless of your pathway, you will be able to choose subjects that interest you and support you in pursuing future education and career goals.** Similarly, the choices available will allow you to decide whether you would prefer to study exam-based GCSE subjects only or a mix of GCSEs and coursework-based subjects such as BTEC Tech Awards or Cambridge National Awards.

As BTEC and vocation courses have changed over time, there are stricter deadlines across the year to submit units of work – once deadlines have passed, students will not be able to submit units of work, which will have a significant impact on overall grades, potentially leading to failure in the subject. For this reason, your attendance will be considered when selecting course-work subjects.

**It is important that you take ownership for your choices – you are committing to a two-year course – once you have made your choices, you need to be 100% committed, we do not have the capacity to change your pathway once Y10 is underway.**

Finally, it is important that choices are made for the right reasons; do not simply choose a subject because your friend is choosing it or because you have not really thought it through. **Choose subjects that feel right for you and that help you to achieve your academic and career goals. Talk to your parents and carers, discuss it with your families and speak to your teachers.** They know your strengths and can support you in your choices.

As you make your option choices, I wish you every success in your studies and as a school we will do all we can to support and help you along the way.

Good luck!

Kind regards,  
Mr McNicholas



# Options Timeline

Below is an overview of the key dates and stages in the Year 9 Options process. Please review the timeline carefully to ensure you are aware of each step and meet all relevant deadlines.

Initial Home Communications: Confirm the details of the Options Process and Evening.	Monday 2nd March 2026
Y9 Options Assembly: Introduction to the Process	W/C 2nd March 2026
Options Booklet Launch: Shared via school website.	Friday 6th March 2026
Option Banding Confirmation: Students will be given their own personal letter in school	Friday 6th March 2026
<b>Y9 Options and Progress Evening: Opportunity to discuss options choices with your teachers.</b>	<b>Thursday 26th March 2026</b>
Deadline: Submission of your options form to main reception.	Friday 24th April 2026
One-to-one meetings: As necessary with Senior Leaders and Careers Team.	W/C 27th April 2026
Confirmation of your Option Choices: Sharing your timetable for the start of Year 10.	W/C 8th June 2026

# Options Bands

Below is an overview of the options available across each of the four pathways. Please review this summary carefully to ensure you understand the choices available.

Option A	Option B	Option C	Option D
Geography	French	Sports Studies	Triple Science
History	Sport Studies	Business	Business
	Creative iMedia	Statistics	Statistics
	RE	RE	RE
	Hospitality and Catering	Citizenship	Health and Social Care
	Travel and Tourism	Health and Social Care	Hospitality and Catering
		Computer Science	Art
		Music	Photography
			Citizenship

# Subjects and Pathways

This booklet provides a summary of each subject, offering further clarity about the content studied during the course, and the qualifications you will achieve on completion. We encourage you to dedicate time to reading the booklet and discussing your option choices with your parents and carers, so that you have the best chance to make informed choices that will give you the opportunity to engage and succeed at KS4.

There are certain subjects which are compulsory within your timetable at KS4:

- English Literature
- English Language
- Maths
- Combined Science
- 1 lesson of PE per week

**In addition to this booklet, you will also receive a personal option form which will confirm your pathway.**

If you are guided onto the **YELLOW** pathway, firstly, you will need to choose:

1. Either History or Geography for option one
2. French for option two

These are compulsory choices to ensure you study for the EBacc.

Option three and four will be an open choice from the full range of other option subjects.

If you are guided onto the **GREEN** pathway, firstly, you will need to choose:

1. Either History or Geography for option one

These are compulsory choices to ensure all students study a Humanities subject.

Option three and four will be an open choice from the full range of other option subjects.

# GCSE - Understanding Gradings

In 2017, the government decided to change the way that GCSE qualifications are graded. Most GCSEs are now graded on a 9-1 scale rather than the previous A\*-G scale. In KS3 we give students a 9-1 working at grade that mirrors this process. Below is a summary of how the 9-1 grading structure relates to the previous structure grading structure - A\*-G

Previous Grading Structure	A*	A		B	C		D	E	F	G	U
Current Grading Structure	9	8	7	6	5	4	3	2	1		U



# Our Subjects



# GCSE English Language & Literature

## COURSE CONTENT

KS4 is the second phase of learning that builds on and strengthens the skills and knowledge that students have developed in KS3. The GCSE English paper consists of two papers, testing students' analytical and writing skills across both fiction and nonfiction. As part of the literature qualification our students answer questions on specific texts studied in lesson. At Barnsley Academy, we currently study: Macbeth, A Christmas Carol, Blood Brothers and Love and Relationships Anthology Poetry.

## HOW TO SUPPORT YOUR CHILD

**Reading** – the number one barrier to accessing GCSE examinations is a student's ability to read and comprehend the questions, texts and extracts they are given. Encouraging them to read (particularly non-fiction texts that focus on the news and current issues) and reading with them helps to develop their vocabulary and builds confidence when they are discussing what they have understood and inferred. These are the best ways to help your child to access the content of the English GCSE curriculum.

**Actively support them with their homework – An easy win:** Your guidance, support and encouragement are key – helping your child to see the value in completing homework can be the difference in succeeding and failing at GCSE.

## HOMEWORK EXPECTATIONS

Students will complete independent exam practice homework, to help strengthen skills learned within lessons. The assignments will correlate with what students are currently studying within school to help with their retention, memory and understanding of how to approach different exam questions

## CAREER OPPORTUNITIES

Journalist, teacher, writer, author – every job requires an English GCSE.

## ASSESSMENT DETAILS

Four exams at the end of Year 11.

### English Language:

Paper 1 (1hr 45mins) - 50% of grade.

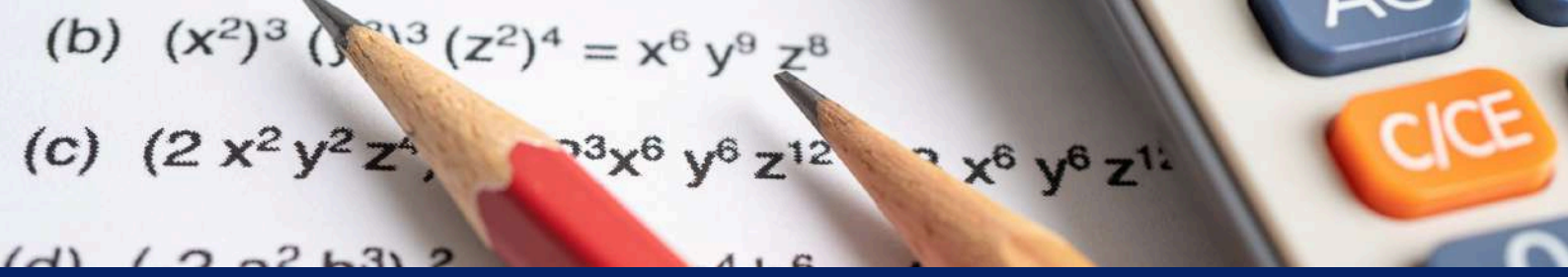
Paper 2 (1hr 45 mins) - 50% of grade.

### English Literature:

Paper 1 (1hr 45 mins) - 40% of grade.

Paper 2 (2hrs 15mins) - 60% of grade.

Students are also expected to take part in regular reviews, quizzes and self-assessment activities within lessons.



# GCSE Maths

## COURSE CONTENT

Maths underpins the world around us, and a good understanding of Maths will help with many everyday life activities from catching a train to managing personal finances. GCSE Maths will develop and test your knowledge and competency in three ways:

**Mathematical Fluency** – teaching you how to use mathematical skills and procedures within a variety of contexts; from the simple, to the more complex.

**Problem Solving** – teaching you how to approach unfamiliar multi-step questions.

**Reasoning** – teaching you how to communicate effectively and explain using mathematical ideas.

## HOW TO SUPPORT YOUR CHILD

Sparx Maths is an excellent tool for independent learning and will help to embed the key skills needed in lesson (following examples, taking notes, applying methods to similar questions), as well as providing instant feedback on practice. After each assessment point students should receive a list of topics from their class teacher detailing where they lost marks and which tasks, they should complete to revise each skill.

## CAREER OPPORTUNITIES

Engineering, architecture, data scientists, accountancy, banking, and many more.

## ASSESSMENT DETAILS

Students will sit the AQA GCSE Maths qualification this is assessed across 3 exams at the end of Year 11, each papers is worth one-third of the overall GCSE, and are each 1 hour 30 minutes.

GCSE Maths is still assessed in tiered papers – meaning that some students will sit 'foundation' exams, and some 'higher' exams. The exam content is split into five areas and the weighting of these changes depending on the tier:

Mathematical Content	Foundation	Higher
Number	25%	15%
Algebra	20%	30%
Ratio, Proportion and Rates of Change	25%	20%
Statistics & probability	15%	15%
Geometry & measures	15%	20%



# GCSE Combined Science

## OVERVIEW

The principal focus of learning science is to develop a deeper understanding of a range of scientific ideas in the subject disciplines of Biology, Chemistry and Physics.

**Biology:** Cell biology, organisation, infection and response, bioenergetics, homeostasis and response, inheritance variation and evolution, ecology.

**Chemistry:** Atomic structure and the periodic table, bonding structure and the properties of matter, quantitative chemistry, chemical changes, energy changes, the rate and extent of chemical change, organic chemistry, chemical analysis, chemistry of the atmosphere.

**Physics:** Energy, electricity, particle model of matter, atomic structure, forces, waves, magnetism, and electromagnetism.

Science at KS4 is a core subject and therefore compulsory. Combined Science is a GCSE course and is worth 2 GCSEs; it is compulsory for all students who have not chosen Triple Science as an option.

## HOW TO SUPPORT YOUR CHILD

A substantial piece of homework is set using Sparx Science and will be completed once a week in Biology, Chemistry, and Physics – this is the minimum requirement. Class teachers may choose to set further pieces of homework. Homework tasks will be based around examination style questions and students will be given one week to complete their homework to the best of their ability.

## ASSESSMENT DETAILS

Students are formally assessed at the end of each unit and are given a GCSE grading to show their progress. These assessments are linear in content to mirror examinations completed at the end of Year 11. Following this, students are given the opportunity to address any misconceptions and to improve their knowledge according to their most recent assessment. Students will also complete end of year exams in Year 10.

## CAREER OPPORTUNITIES

Many careers require science such as medicine, marine biology, sports science, and physiotherapy.



# GCSE Triple Science

## OVERVIEW

In Triple Science, the students study the same range of subjects/topics as Combined Science but in more detail and with some additions such as space, which is studied in Physics.

**Biology:** Cell biology, organisation, infection and response, bioenergetics, homeostasis and response, inheritance variation and evolution, ecology.

**Chemistry:** Atomic structure and the periodic table, bonding structure and the properties of matter, quantitative chemistry, chemical changes, energy changes, the rate and extent of chemical change, organic chemistry, chemical analysis, chemistry of the atmosphere.

**Physics:** Energy, electricity, particle model of matter, atomic structure, forces, waves, magnetism and electromagnetism, and space.

## HOW TO SUPPORT YOUR CHILD

A substantial piece of homework is set using Sparx Science and will be completed once a week in Biology, Chemistry, and Physics – this is the minimum requirement. Class teachers may choose to set further pieces of homework. Homework tasks will be based around examination style questions and students will be given one week to complete their homework to the best of their ability.

## ASSESSMENT DETAILS

Students are formally assessed at the end of each unit and are given a GCSE grading to show their progress. These assessments are linear in content to mirror examinations done at the end of Year 11. Following this, students are given the opportunity to address any misconceptions and to improve their knowledge according to their most recent assessment. Students will also complete end of year exams in Year 10.

## CAREER OPPORTUNITIES

Many careers require science, such as medicine, marine biology, sports science, and physiotherapy.



# GCSE French

## OVERVIEW

Bienvenue! In the MFL department we aim to bring joy to language learning by providing excellent teaching and learning to ensure all learners achieve their full potential. The curriculum is designed to not only boost the confidence of language learning and linguistic ability, but also enjoyment of another language, while teaching students to be resilient in their efforts.

## COURSE CONTENT

The KS4 curriculum falls into 6 themes -

- My personal world
- Lifestyle and wellbeing
- My neighbourhood
- Media and technology
- Studying and my future
- Travel and tourism

In KS4 we facilitate a cinema trip to Sheffield to watch a film in French, which is always well received. We also offer the opportunity to travel abroad so you can experience the culture and try your hand at communicating with the locals

## CAREER OPPORTUNITIES

Speaking and learning another language complements any career. Languages are a perfect match with many subjects at A-Level and degree level (e.g., French and Law).

Job opportunities include - translation and interpreting, teaching, tourism, journalism, international business, law, diplomacy, engineering, and many more.

## ASSESSMENT DETAILS

At GCSE we use the exam board Edexcel, and the exams are broken down into four different parts: reading, listening, writing, and speaking.

The speaking exam is completed under exam conditions with class teachers and the other skills are assessed in the hall under exam conditions.



# GCSE History

## COURSE CONTENT

The History department at Barnsley Academy follow the Edexcel GCSE specification. This content includes:

**Unit 1: Medicine in Britain 1250-present** - *students explore the main ideas about cause, treatment, and prevention of disease through time.*

**Unit 1: The British sector of the Western Front; injuries, treatment, and the trenches** - *Students explore how ideas about medicine were applied in a real-life situations and at the main injuries during the war; assessing how far treatments improved at this time.*

**Unit 2: Early Elizabethan England 1558-1588** - *students explore the reign of Queen Elizabeth I, examining the religious and political events that took place during her reign including conflict between Catholics and Protestants.*

**Unit 2: Super-power relations and the Cold War 1941-91** - *Students will examine the relationship between the USA and the USSR after WW2.*

**Unit 3: Weimar and Nazi Germany 1918-39** - *Students will study the creation of the new Weimar Republic, examine the political failures and successes of this government and examine the changes in the lives of German citizens throughout this time.*

## HOMEWORK SET

Homework is a mixture of exam style questions and recap quizzes which underpin recall and extend students' knowledge. Revision guides will be provided, these give helpful advice on exam technique and question structures.

## CAREER OPPORTUNITIES

Law, politics, the police, criminology, psychology, journalism, business, design, education, politics, engineering, and many others.

## ASSESSMENT DETAILS

Students will be prepared for these through.

**Paper 1** - Medicine in Britain and the Western Front - 1hr20mins, 52 marks, 30% of grade.

**Paper 2** - Early Elizabethan England and Super-power relations - 1hr50mins, 64 marks, 40% of grade.

**Paper 3** - Weimar and Nazi Germany - 1hr30mins, 52 marks, 30% of your grade.



# GCSE Geography

## OVERVIEW

This exciting course is a balance between physical and human geography. It allows students to investigate the link between the two themes, and approach and examine the battles between the human-made and the natural worlds. In addition to this, you will also be taking an active part in a geographical fieldwork enquiry. You will undertake fieldwork opportunities for both physical and human elements of the course in year 10 and 11. Students who complete the course will have the skills and experience to progress onto A-Level and beyond.

## LEARNING STRUCTURE

You will learn through:

- Exam practice questions in every lesson
- Regular feedback from staff and peers
- Homework based on further research or revision
- End of topic assessments for each unit.
- Individual and collaborative work both within lessons and for homework

## ASSESSMENT DETAILS

This course is split into the following exam papers:

Paper 1: Global Geographical Issues (37.5%). Written exam- 1hr 30mins - 94 marks.

Paper 2: UK Geographical Issues (37.5%). Written exam- 1hr 30mins - 94 marks.

Paper 3: People and Environment Issues – Making geographical decisions (25%). Written exam- 1hr 30mins - 64 marks.

## CAREER OPPORTUNITIES

With a qualification in Geography, you will be able to access a wide range of opportunities. Geography was rated as the “must have A-level” (The Guardian, 2015) and is one of the top facilitating subjects that Russell Group universities desire.

If you are not 100% certain on your career choices at this stage, studying Geography enables you to keep your options open.

The following career paths are examples of the potential jobs open to Geography students: Oceanography, Construction, ecology, hydrologist, landscape architect, town planning and more.



# BTEC Travel & Tourism

## OVERVIEW

The aim of the BTEC Tech Award in Travel & Tourism is to actively engage students in the investigation of the travel and tourism industry. Students will develop an understanding of the nature of the travel and tourism industry as well as the contribution it makes to the UK economy. Students will build an awareness of the health and safety issues central to the industry as well as the importance of sustainability and the impact of leisure and tourism on the environment. Students will explore the functions of sales and marketing in the leisure and tourism industry.

## LEARNING STRUCTURE

You will learn through teacher guidance and independent practice, regular feedback from staff and peers, homework based on further research or revision, individual and collaborative work both within lessons and for homework.

## ASSESSMENT DETAILS

This qualification is taught over 120 guided learning hours . It includes three components, two of which are coursework-based (controlled assessment) with the other assessed externally through a two hour exam (Component 3).

For the externally assessed unit, students are given two opportunities to sit the exam in Year 11 with the best mark counting towards their overall grade.

## CAREER OPPORTUNITIES

Potential employment could include: Driving cars, lorries, buses, trains or flying planes. Airline cabin crew and train staff which help passengers use the transport. Controlling transport networks, air traffic controllers and transport schedulers. Travel agents that help customers plan and book their travel and tour guides/resort reps that help people once they arrive at their holiday destination



# GCSE Computer Science

## **COURSE CONTENT**

Unit 1 - Introduces students to the central processing unit (CPU), computer memory and storage, data representation, wired and wireless networks, network topologies, system security and system software. It also looks at ethical, legal, cultural, and environmental concerns associated with computer science. Unit 2 - Computational thinking, algorithms, and programming: Students apply knowledge and understanding gained in unit 1. They develop skills and understanding in computational thinking: algorithms, programming techniques, producing robust programs, computational logic, and translators

## **HOW TO SUPPORT**

Students will be expected to complete a range of activities for homework including booklets, Seneca, and revision. Students can be supported by you offering support completing homework, the use revision guides at home and access Seneca to further their understanding. There are also various websites that can be used to develop knowledge such as the Clear Revise textbook, BBC Bitesize and CSNewbs.

## **CAREER OPPORTUNITIES**

A GCSE in Computer Science can support students to pursue both A-levels (Computer Science) and apprenticeships.

Potential Careers could be: Cyber-security, Forensic Computer Analyst, Games Development, IT Consultant, Web Design and more.

## **ASSESSMENT DETAILS**

Students will complete regular assessments in lesson and complete programming tasks during the course to develop their skills to design, write, test, and refine programs.

At the end of Year 11, Unit 1 and Unit 2 are assessed with two 90-minute written exams, each with an equal weighting of 50% of the GCSE qualification



# Creative iMedia

## OVERVIEW

This qualification aims to equip young people with the knowledge, understanding and skills they need to design and make, effective digital products for others to use. They will complete 4 Units, which will include:

**Pre-production skills:** Students are introduced to a range of essential pre-production techniques used in creative and digital media, including client brief, time frames, deadlines, and preparation techniques.

**Creating digital graphics:** Students will explore where and why digital graphics are used and the techniques that are involved in their creation. They apply their skills and knowledge, creating digital graphics for a specific client brief.

**Creating an animation:** Students will create an animation for a new product like the startup screen for a new mobile phone. This will involve developing skills in animation software to create fully functional animations with relevant images and sounds to match the given client brief.

## HOMEWORK SET

Students will be expected to complete a range of activities for homework including research, creating storyboards and planning.

## CAREER OPPORTUNITIES

A qualification in Creative iMedia can lead to many varied careers including animation, graphic design, film production, website development and more.

## ASSESSMENT DETAILS

Assessment is based on the multimedia projects that will be completed in lessons, alongside a practical examination based on pre-production skills worth 40%. The other units will be assessed internally as coursework and account for 60% of the overall grade.



# GCSE Business

## OVERVIEW

This course covers all aspects of business and supports students to run their own business to build up real skills for their future. The course covers:

- Business structures, including the different ways to set up a business.
- Marketing, including advertising, development of products, setting the best price. Recruitment, how businesses get the right staff and keep them working well. Business operations, including how businesses produce the things we buy.
- Finance, including how businesses get the money to set up and operate and how they make a profit.
- Influences on businesses, including the environment and how many businesses are operating around the world.

## HOW TO SUPPORT LEARNING

Students will be expected to complete a range of activities for homework including online quizzes, Seneca, Business Ed, research tasks and exam practice. You can assist by offering support to complete homework and encouraging the use of revision guides/resources at home. There are also various websites that can be used to develop knowledge such as Seneca, BBC Bitesize and [www.businessed.co.uk](http://www.businessed.co.uk)

## CAREER OPPORTUNITIES

GCSE Business can lead students down the following pathways: A-level (Business, Accounting, Economics and many more) BTEC Courses (Business, Administration, Accounting etc) and Apprenticeships.

It can lead to pursuing the following careers: Business Management, HR, Business Planning, Consultancy and more.

## ASSESSMENT DETAILS

Students will complete regular assessments in GCSE Business and mock examinations. At the end of Year 11 Unit 1 and Unit 2 are assessed with two 90-minute written exams, each with an equal weighting of 50% of the GCSE. Some questions will be multiple choice, some will require extended written responses.



# GCSE Photography

## OVERVIEW

The course encourages the exploration of photography as an artistic medium. It combines well with traditional subjects, providing an outlet for creativity. Photography should form a means of personal enquiry and expression involving the selection and manipulation of images. Students must employ creative approaches which go beyond observation and recording. Students will learn traditional elements of photography, but the course predominantly explores experimental photography.

## HOMEWORK STRUCTURE

Like all subjects you will be expected to complete home learning tasks. Extended study or enrichment sessions will also be available outside of school hours, where students can use the photography studio to complete homework tasks. Most homework tasks will be set by the teacher and based around the project/s the students are working on. Homework set in GCSE Photography will be to complete photo shoots and students are expected to go to several locations, such as the town centre.

## COURSE MATERIALS

There is no requirement to buy an expensive camera as they are available in school for exploring more technical aspects of photography. A smartphone with a camera will more than suffice. Students will need to supply their own smartphone data cable, which can be picked up cheaply online. Some students may also wish to work in a sketchbook, rather than an online portfolio. High quality paper is recommended with a hard cover to protect students work. We can provide a black A4 sketchbook, however students can work in any size so may want to provide their own.

## ASSESSMENT DETAILS

Unit 1: Digital Portfolio

Project 1: Distorted Portraits

Project 2: Still Life

60% of grade.

Unit 2: Exam

Paper received in January, students pick from themes.

Preparatory period followed by a 10hr timed period.

40% of grade.

## CAREER OPPORTUNITIES

Include design, advertising, marketing, film, television and more.



# GCSE Fine Art

## OVERVIEW

Work in Fine Art should form a means of personal enquiry and expression involving the selection of materials, media, and artistic processes to explore, create and refine. You have the option to develop your drawing and mark making abilities and have the opportunity to experiment with a variety of different art materials.

## HOMEWORK STRUCTURE

The courses require you to become an independent learner. This includes consistent, daily diary/journal entries working to complete the 4 R's; Research, Reproduce, Re-imagine, and Recreate. A minimum of 3 hours and up to 6 hours per week as good artwork takes time. To support this, extended study or enrichment sessions will also be available outside of school hours including frequent attendance to termly Saturday school sessions.

## COURSE MATERIALS

We recommend purchasing some of the most basic specialised art materials for home use including sketching pencils, colour pencil crayons, water colour paints, set of brushes and A2 or A3 folder. These can be purchased from a variety of shops such as B&M and The Range and can suit a range of budgets. We also have equipment available in school for students to loan. Sketchbooks will be provided, however, if students wish to purchase their own in a desired size, we recommend paper of quality 140gsm or more with a hard cover to protect student work.

## ASSESSMENT DETAILS

Unit 1: Digital Portfolio

Project 1: Portraiture

Project 2: Ceramics

60% of grade.

Unit 2: Exam

Paper received in January, students pick from themes.

Preparatory period followed by a 10hr timed period.

40% of grade.

## CAREER OPPORTUNITIES

Careers include art and design, ceramics, jewellery, environmental design, illustration, product design, photography, film, textiles and printing, interior design and more.



# Hospitality & Catering

## OVERVIEW

This is an exciting course in which you will develop your food preparation skills and food service knowledge. You will learn and demonstrate a range of cooking skills, making a variety of dishes including bread, pasta, pastry, baked goods, and meat/fish recipes, which you will style creatively. Furthermore, you will develop your understanding of diet, health, nutrition, safety, and sustainability in the hospitality & catering sector. You will learn how providers operate and what they must consider to be a successful business.

## INGREDIENTS

Most ingredients will be provided by the Academy; we ask for a voluntary donation to subsidise these costs. Support will be provided for pupil premium/free school meals students.

Unit 1: The Hospitality and Catering Industry (Exam)	Unit 2: Hospitality and Catering in Action (Coursework)
<p>External assessment in the form of a written examination: 1-hour 30minutes. Topics covered: The hospitality and catering industry, hygiene and safety, types of service, job roles, food poisoning, health &amp; safety laws, environmental health.</p>	<p>Research, plan, prepare, cook, and present nutritional dishes. 12 hours (including a 3-hour practical assessment). Topics covered: Nutrition, diets and dietary requirements, menu planning, environmental considerations, skills and techniques, commodities, serving and presentation.</p>
<p>40% of grade. Externally marked.</p>	<p>60% of grade. Internally marked and externally moderated.</p>

## CAREER OPPORTUNITIES

This course can lead to careers within hospitality and catering sectors including chef, hospitality host, relations managers, hotel catering and management etc.

## HOMEWORK

Most homework tasks will be set by the teacher and based around the project/s the students are working on.





# GCSE Music

## OVERVIEW

This course is ideal for any student with a passion and talent for music. It provides opportunities to build practical skills and technical knowledge through exploration of a range of styles of music. Students can develop their performance ability in a range of instruments and learn how to compose their own music using computer software.

## COURSE AND ASSESSMENT DETAILS

### Component 1: Performing (30%)

In this component, you will develop your performance skills on your chosen instrument, working towards a performance of two pieces, at grade 3 standard or above, for 4-6 minutes. You will engage in classroom and one-to-one tutoring activities to improve your technique, instrumental control, expression, and musicality.

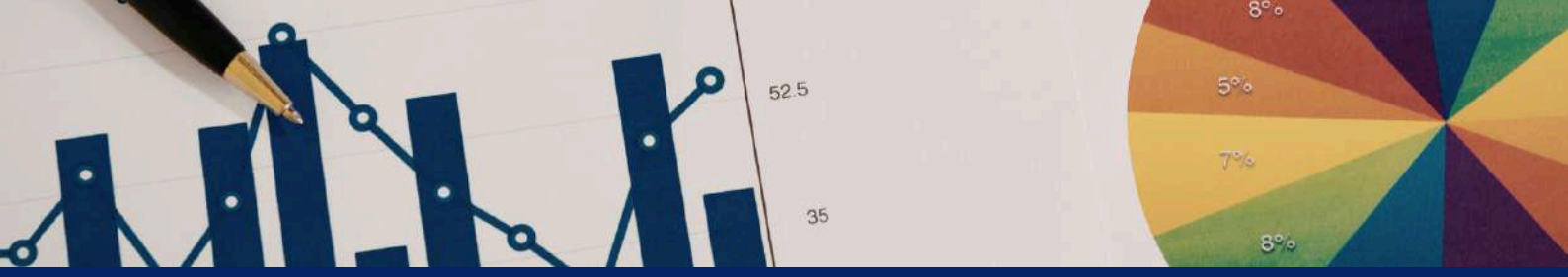
**Component 2: Composition (30%)** In this component, you will participate in workshops and classes where you will develop technical, expressive, and creative skills to compose your own pieces of music. You will be required to compose two pieces of music. One composition will be devised based on a brief provided by Eduqas while the other can be the learner's choice and can explore various styles of music.

### Component 3: Listening and Appraisal (40%)

This component will provide a rigorous understanding about the contextual, theoretical, and technical elements which underpin pieces across four set areas of study (AOS). The content for this will be delivered through a series of workshops and classroom-based activities which will give learners the opportunity to learn about the contextual elements of music while engaging in practical performance and compositional based activities.

## CAREER OPPORTUNITIES

Music producer, teacher, music therapist, musician, sound designer, sound engineer, sound technician, arts administrator, broadcast engineer, community arts worker, event manager, marketing executive, radio broadcaster, radio producer, talent agent.



# GCSE Statistics

## OVERVIEW

This qualification is ideal for students wanting to study Maths further at A level and beyond. Statistics is about making decisions where there is uncertainty. It gives students the skills to collect, analyse, interpret, and present data. The main topics covered fit into the following steps of data collection:

- Planning a clear strategy for collecting data, including identifying questions and hypotheses.
- Recognising the benefits, constraints and ethics involved in data collection and how we can collect data using different methods.
- Creating data visualisations (using maps, graphs, and charts).
- Calculating statistical measures. Interpreting the results of a statistical investigation, discussing the validity and reliability of findings, and writing clear conclusions.

## HOMEWORK AND HOME SUPPORT

Every student studying GCSE Statistics will be provided with a CPG revision guide to take home for support. Each week staff will direct students to appropriate topics to revise at home. Most students struggle initially with the subject specific terminology involved in GCSE Statistics, so we encourage the use of flashcards and mini quizzes to support with definition learning outside of lesson time.

## CAREER OPPORTUNITIES

GCSE Statistics opens the door to a variety of careers including, weather forecasting, biological sciences, business, finance, market research and data analysis.

## ASSESSMENT DETAILS

This qualification is assessed through two 1 hour & 45-minute exam papers at the end of Y11. Both papers have a total of 80 marks and a calculator is permitted for use in both exams. We run both the Foundation (Grade 1-5) and Higher (Grade 3-9) qualifications concurrently.



# GCSE Religious Studies

## OVERVIEW

Religious and moral issues are often in the news—but is the coverage always reliable, fair, and balanced? In GCSE Religious Education, you will explore this question while gaining an understanding of the beliefs, teachings, and practices of two major world religions. You will examine the views of both religious and non-religious people, consider ultimate questions about creation, purpose, evil, morality, and life after death, and deepen your understanding of contemporary ethical and religious issues around the world. Along the way, you will strengthen your philosophical and critical thinking skills, as well as your ability to write extended, well-structured arguments and counter-arguments.

## ASSESSMENT DETAILS

**Component 1: Religious, Philosophical and Ethical Studies in the Modern World (50% of qualification, 2hr exam)**

This component provides you with the opportunity to study four Philosophical themes: Issues of Relationships, Issues Life and Death, issues of Good and Evil and Issues of Human Rights.

**Component 2: A Study of Christianity (25% of qualification, 1hr exam)**

This component provides you with the opportunity to undertake an in-depth study of Christianity as a world religion. You'll look at Christian beliefs, teachings and practices and the impact they have on communities and individual believers.

**Component 3: A Study of a World Faith- Islam (25% of qualification, 1hr exam)**

This Component allows an exploration of one other world faith from a choice of five. You will study Islam. You will study Islamic beliefs, teachings and practices and the impact they have on the lives of these believers.

## CAREER OPPORTUNITIES

Law, politics, journalism, academia, teaching, charity fundraiser, and civil service.



# GCSE Citizenship

## OVERVIEW

Citizenship is about how people take an active part in democratic politics and work together for a better society, locally, nationally, and globally. Students will learn about power, democracy, the operation of government and the legal system, and the role of the UK in the wider world. They will explore and learn about different controversial and topical issues with political, social, ethical, economic, and environmental dimensions in local to global contexts. They will experience taking citizenship action and learn from trying to make a difference themselves.

## COURSE CONTENT

The course content is divided into five themes:

1. Living together in the UK
2. Democracy at work in the UK
3. Law and Justice
4. Power and Influence
5. Taking Citizenship Action

For the final theme, Taking Citizenship Action, students must carry out an in-depth, critical investigation and action. This can be based on any aspect or issue arising from the course content and should be designed to have an impact locally, nationally, or globally.

## CAREER OPPORTUNITIES

Citizenship is an ideal preparation for A Level subjects like Law, Philosophy, Government and Politics and History. Careers in Law, the Public Sector, Politics, Diplomacy, Social Work, Local and National Government would all be well served by Citizenship Studies.

## ASSESSMENT DETAILS

The final GCSE assessments will be in the form of two 1 hour 45-minute exams which will examine the taught topics in one paper and the research topic in the other.



# BTEC Health & Social Care

## OVERVIEW

Health and social care will develop students understanding of the rights of individuals and how these apply when working with service users. Students will gain an understanding of how to protect individuals through infection prevention, safeguarding and safety and security measures. Students will learn about life stages and explore life events and how to support individuals through them.

## COURSE CONTENT

Students will study units covering principles of care, supporting individuals through life events and health promotion campaigns, developing an understanding of individual rights, person-centred values, effective communication and safeguarding in health and social care settings. They will build practical, transferable skills, confidence and independence, applying creative, analytical and critical thinking to real-life and work-related contexts.

## COURSE RESOURCES

Pearson BTEC Health and Social Care Student Book

## CAREER OPPORTUNITIES

Care worker, nurse, health advisor, counsellor, occupational therapist, and youth working.

## ASSESSMENT DETAILS

Students will be assessed on 3

Component areas -

Component 1: Human Lifespan

Development – 30% of the final grade.

Component 2: Health & Social Care

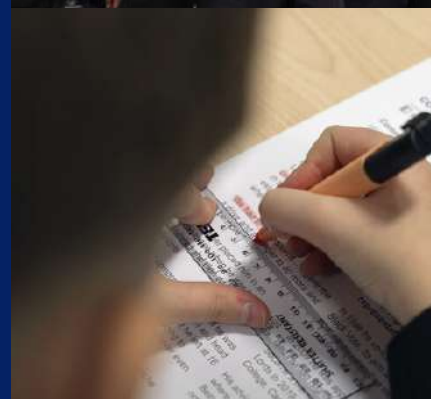
Services and Values – 30% of the final grade.

Component 3: Health & Wellbeing – 40% of the final grade.





**Barnsley Academy**  
The best in everyone™  
Part of United Learning



# AMBITION DETERMINATION RESPECT

Barnsley Academy  
Farm Rd, Kendray  
Barnsley  
S70 3DL

01226 284 606  
[admin@barnsley-academy.org](mailto:admin@barnsley-academy.org)